





**SMAGON Ind. e Com de
Componentes Mecânicos
Ltda.**

www.smagon.com

smagon[®] - registered trade mark



It was created from the junction of three first letters
of each initial partners name

SMAniotto + **GON**zaga = **SMAGON**



PLANT VIEWS



▣ PLANT VIEWS



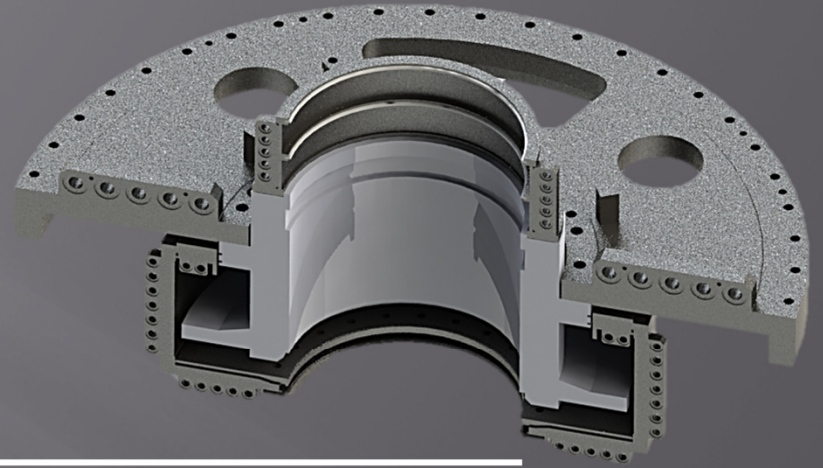
Actual plant : 24.000 m²



New plant will be built in the industrial district – 36.000 m²



PLANT AREA



FOUNDRY

1.224 m²

MACHINING

4.144 m²

ELECTROPLATING

216 m²

LABORATORIES

102 m²

TOTAL

5.686 m²

ESTATE AREA

24.000 m²

MARKET



Nuclear



Power Plants



Hydro



Wind



Mining



Stell Makers



Coils



OIL & GAS



Paper



GAS Power Plant



Sea - Navy



Trains

INFOS

- ▣ 2nd largest bearing manufacturer in Brazil
- ▣ Only Brazilian bearing company to do overseas business and trade Shows
- ▣ Only Bearing Company in Brazil to Produce TRI METAL parts - bearings / strips
- ▣ Casting Process (Spinning) up to 2000mm
- ▣ First Brazilian bearing Company to supply to a OEM
- ▣ We produce our on Babbitt 99% according the standards

The Quality of the Babbitt , depends on the higher preparation and quality control associated during the casting process.

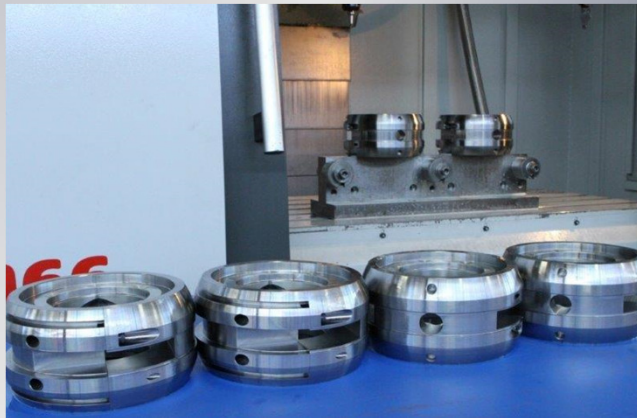


Babbity alloy 100% pure.

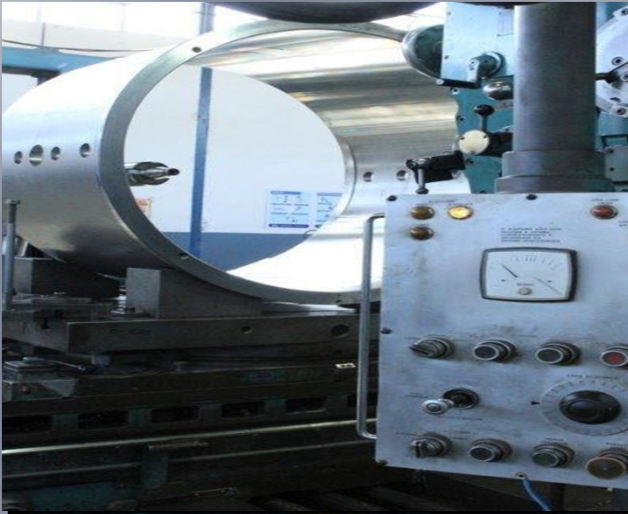
PLANT INTERNAL VIEWS



PLANT INTERNAL VIEWS

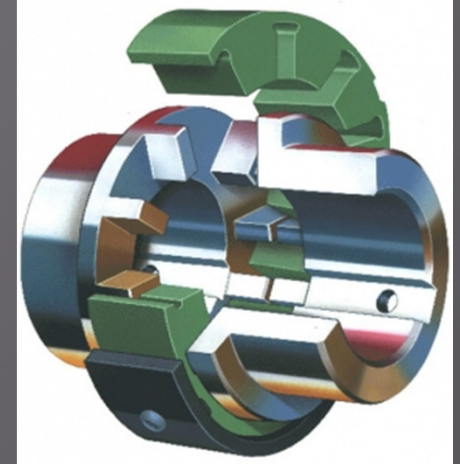


PLANT INTERNAL VIEWS



PRODUCTS

AUTOMOTIVE BEARINGS – HEAVY ENGINES
BEARINGS



HYDRO DYNAMICS BEARINGS

NEW AND REPAIR

MORGOIL BUSHINGS

DIN BEARINGS

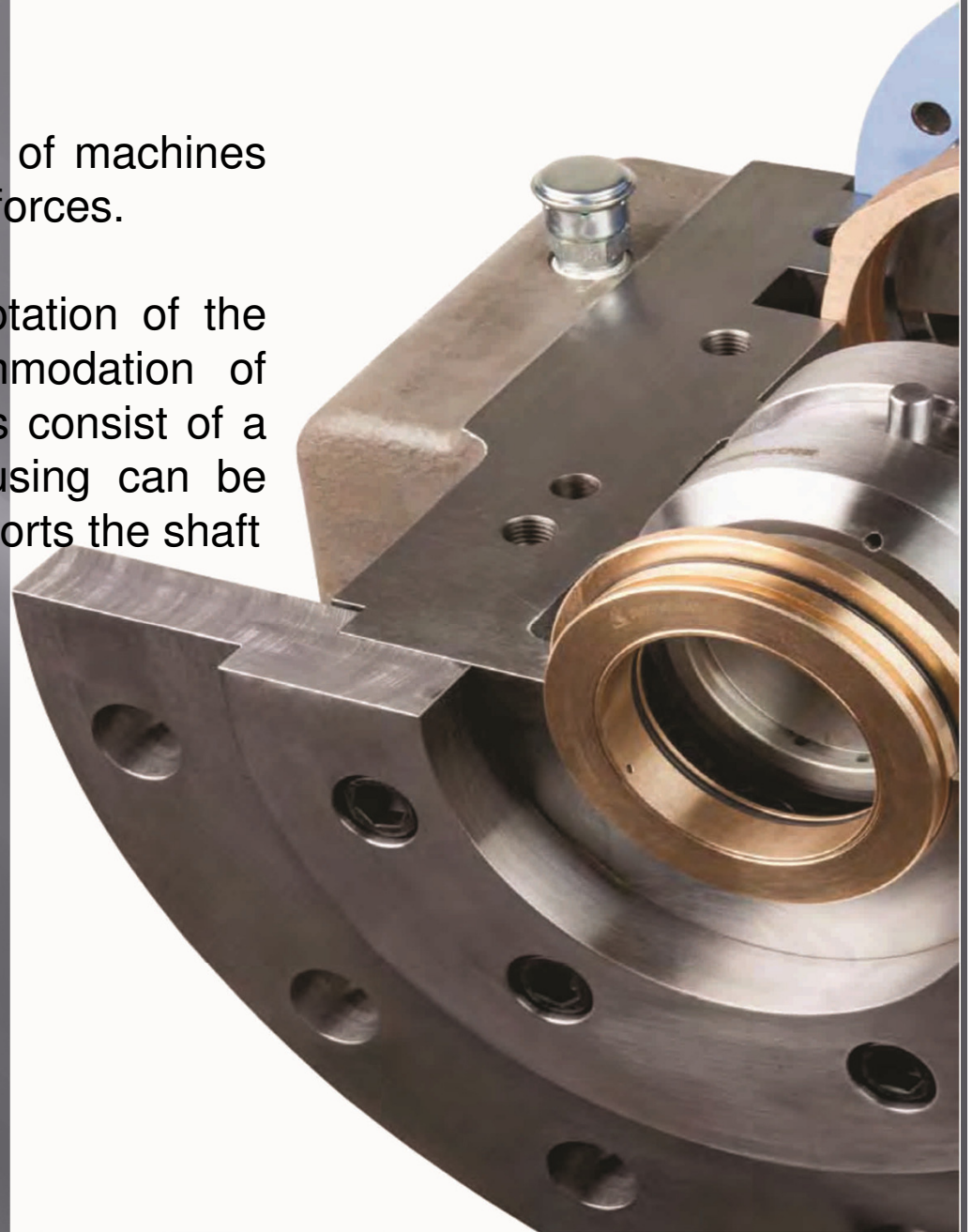


MRO (Maintenance , Repair , Overhaul)

FLUID FILM BEARINGS

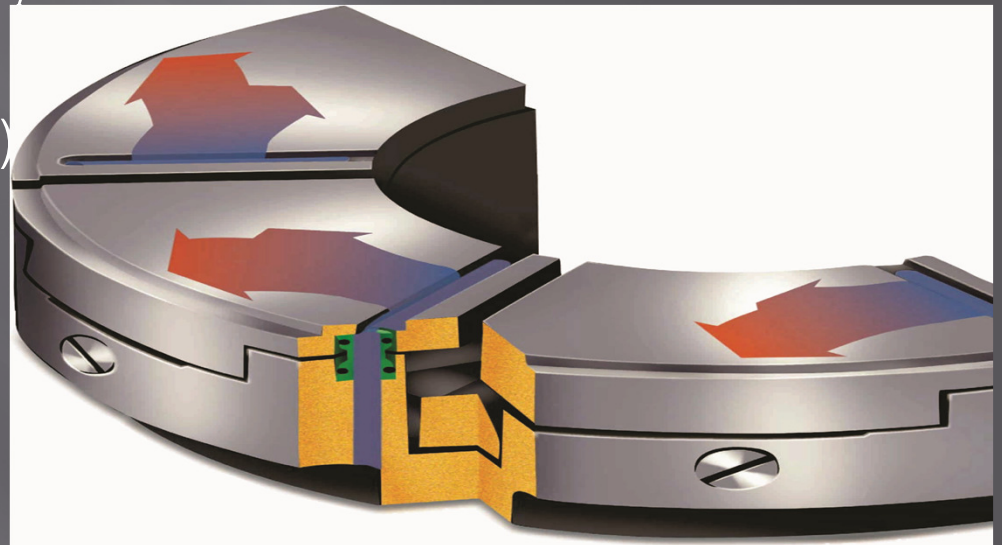
The Fluid Film Bearings are elements of machines those bearings are subject to frictional forces.

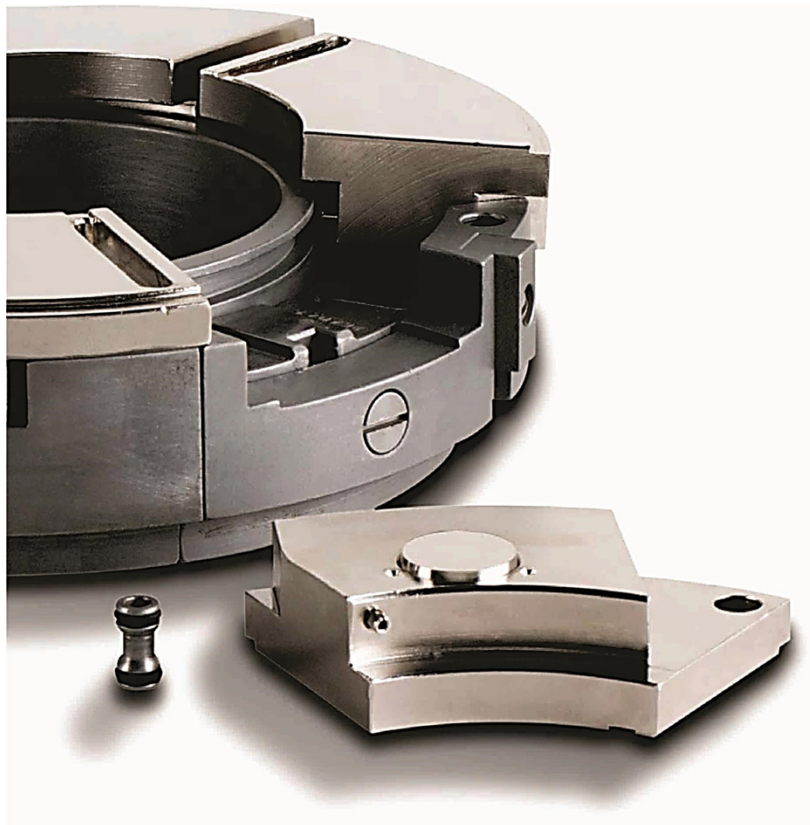
These forces increase due to the rotation of the shafts carrying loads in the accommodation of bearings. Generally, the plain bearings consist of a bushing fixed to a support. The housing can be defined as a support or guide that supports the shaft



PRODUCTS

- Main bearings / Pads
- Connecting rod bearings
- Bushes
- Thrust washers
- Thrust shoe bearings
- Radial shoe bearings
- Strip bearings
- Tilting Pad Thrust Bearings
- Tilting Pads Journal Bearings
- Horizontal and Vertical Bearings / Fixed Profile Bearings
- Seals (Mechanical and Labirint)





Applications

- Bombas
- Compressores Alternativos e Rotativos
- Exaustores de Grande Porte
- Geradores
- Laminadores
- Moinhos
- Motores Elétricos
- Multiplicador de velocidade
- Redutores de Velocidade
- Sopradores
- Turbinas

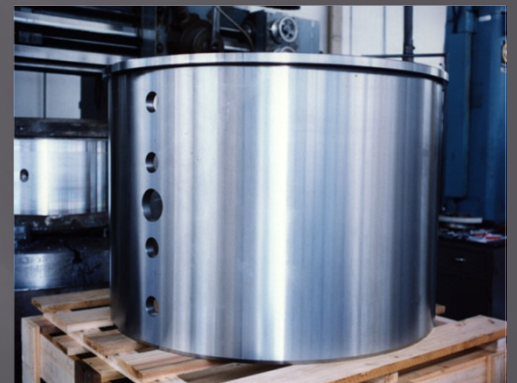
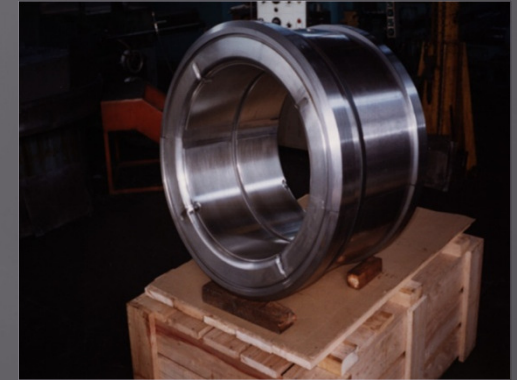
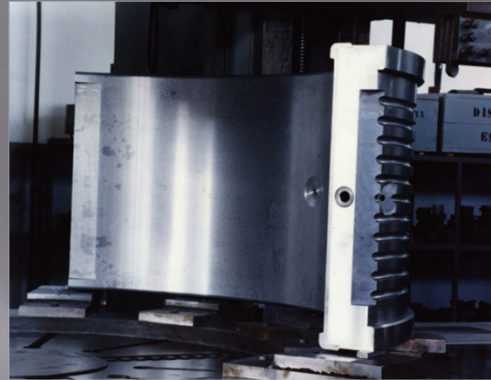
- Mancais Lobulares
- Mancais Elípticos
- Mancais Radiais Auto Compensadores
- Mancais Axiais Auto Compensadores
- Mancais Esféricos com Sapatas Axiais
- Mancais Radiais Axiais



INDUSTRIAL FLUID FILM BEARINGS

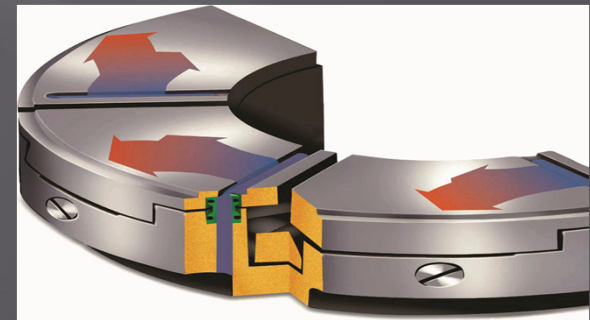
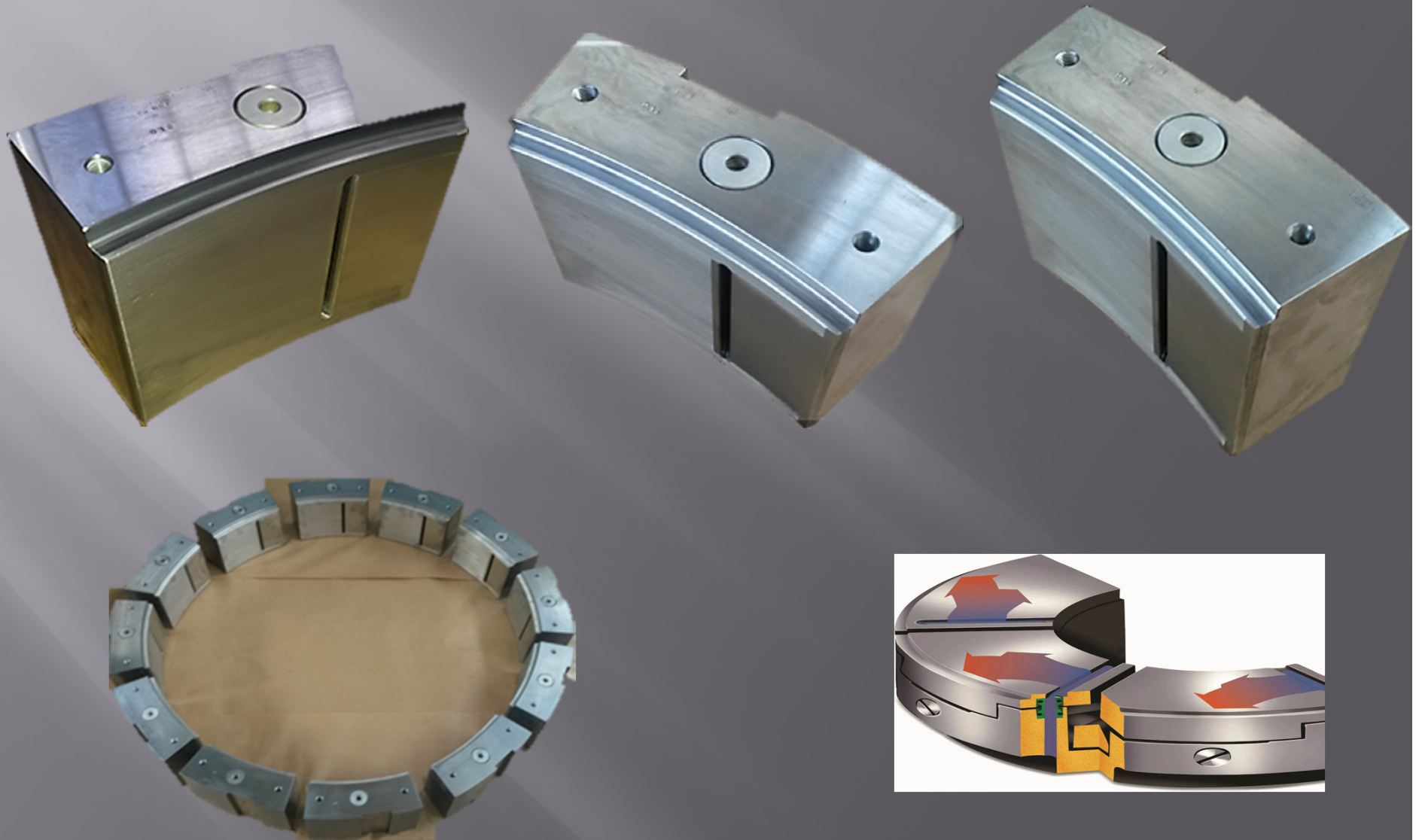
Suitable to:

- Turbines
- Pumps
- Compressors
- Rolling mills
- Cement mills
- Turbochargers
- Electric motors
- Generators
- Hydro
- Paper
- Steel Makers
- Gearboxes



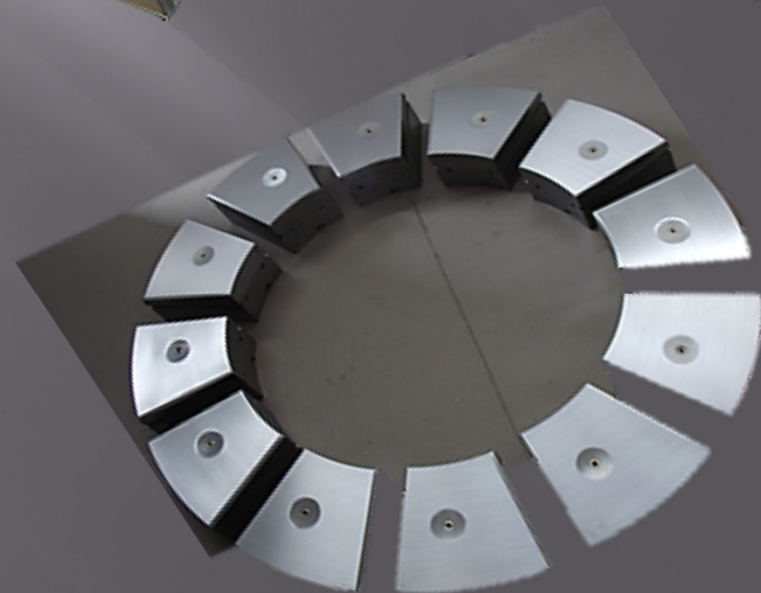
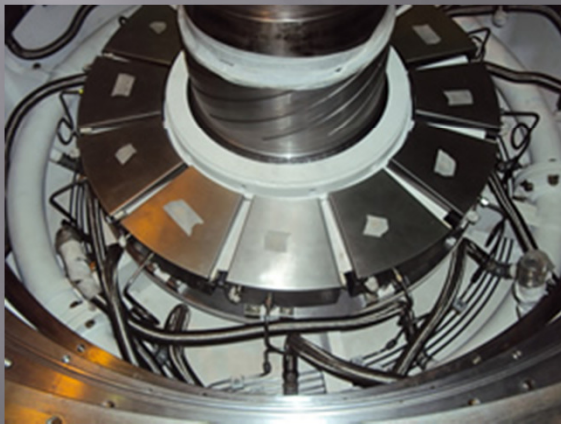
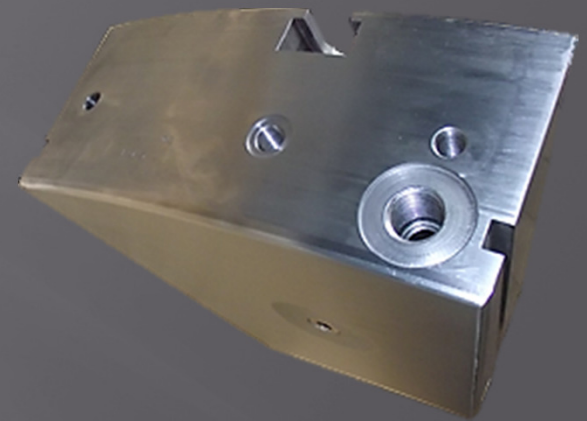
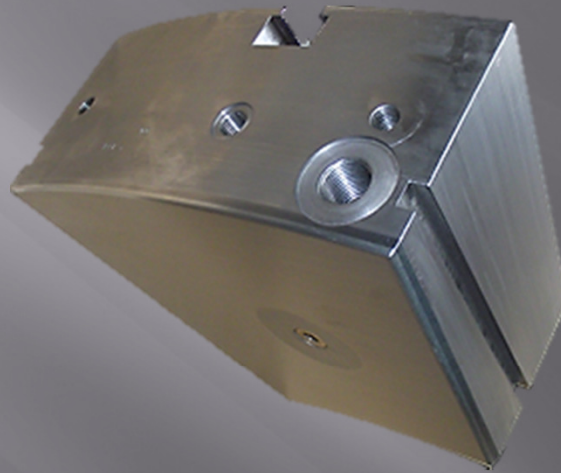
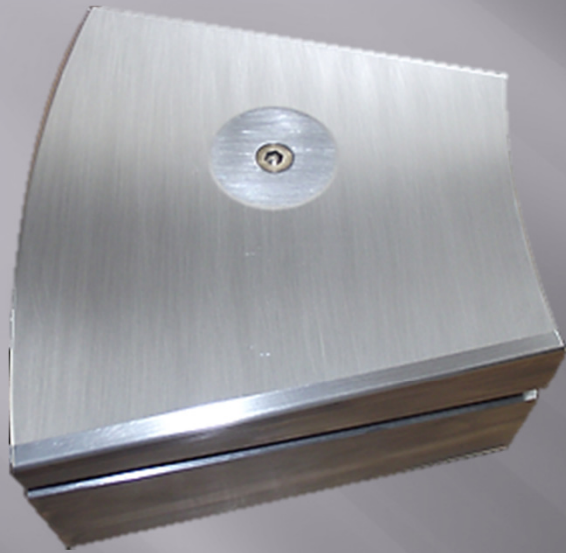
Hydro Bearings – Radial Shoes

UHE SENHORA DO PORTO

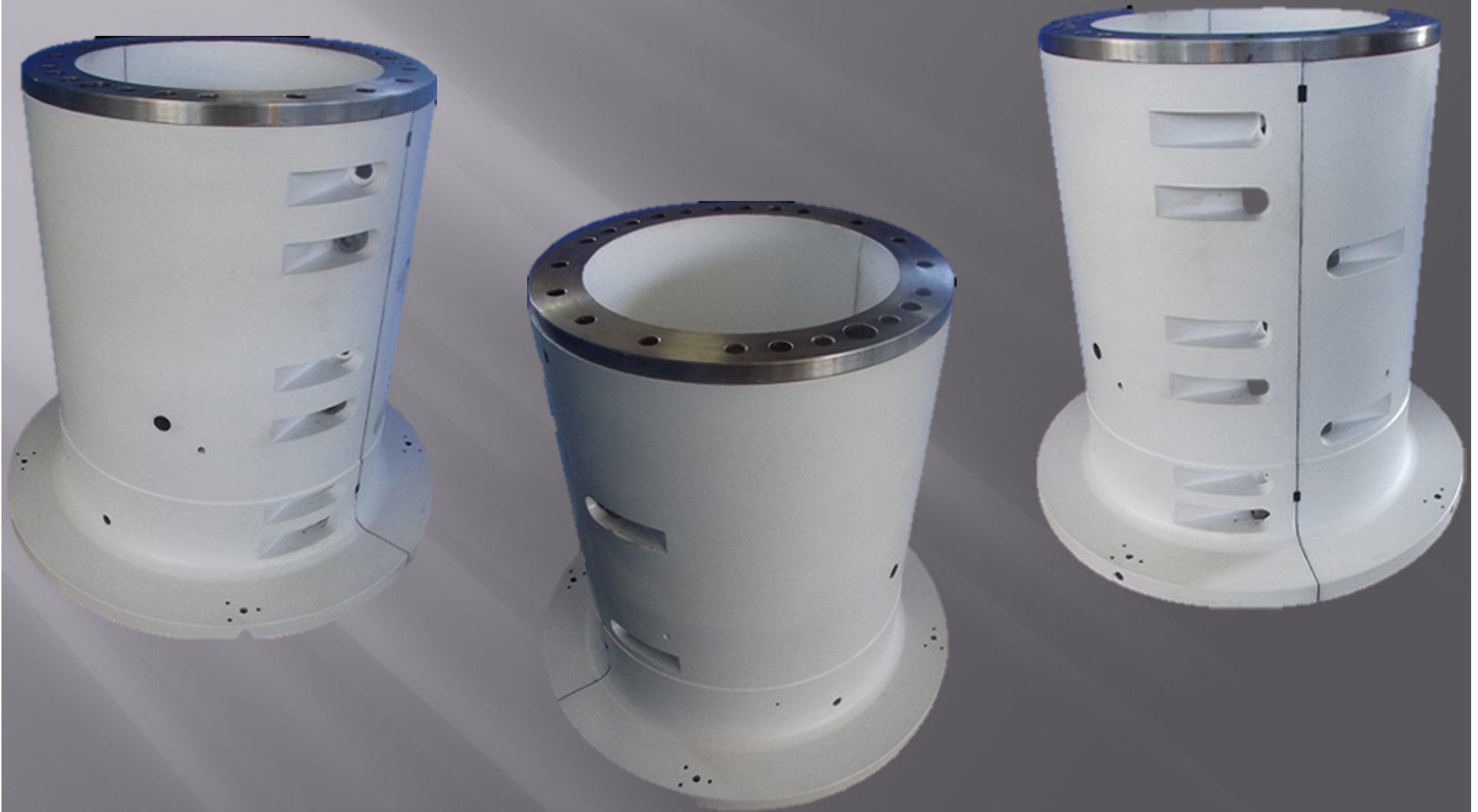


Hydro Bearings – Axial Shoes

UHE DORES DE GUANHAES

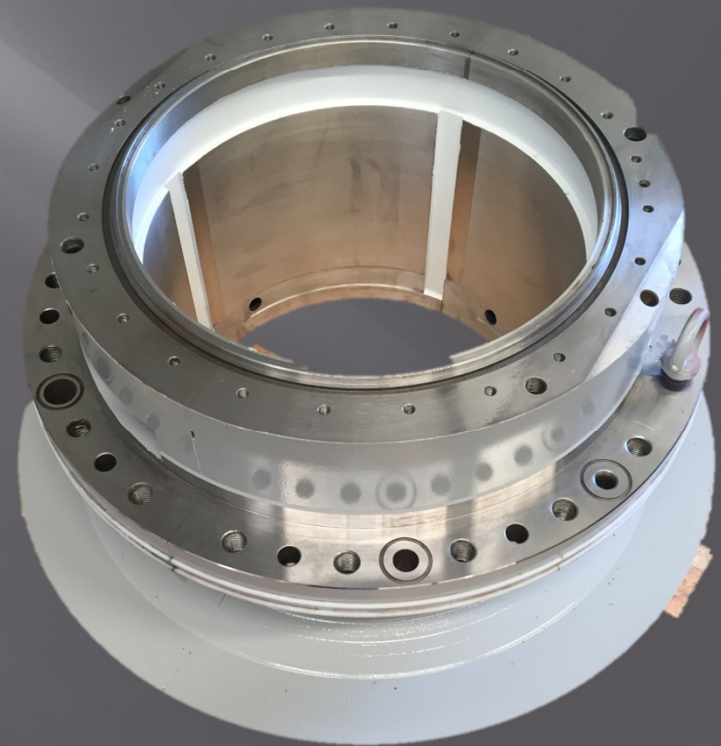
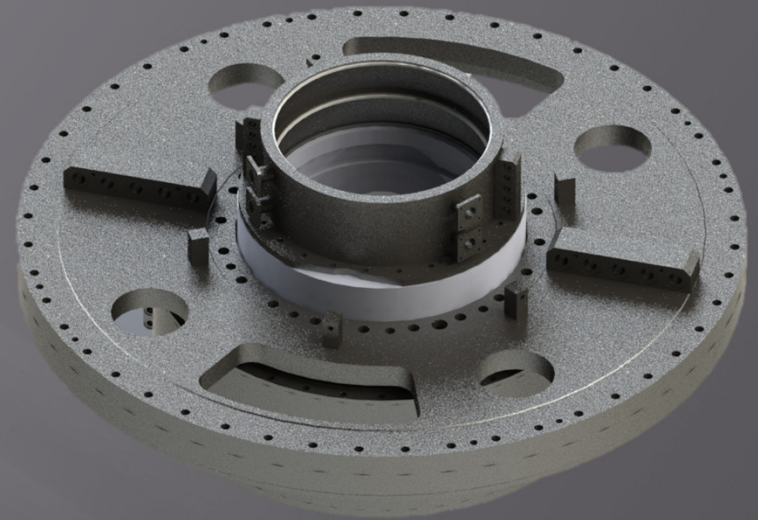
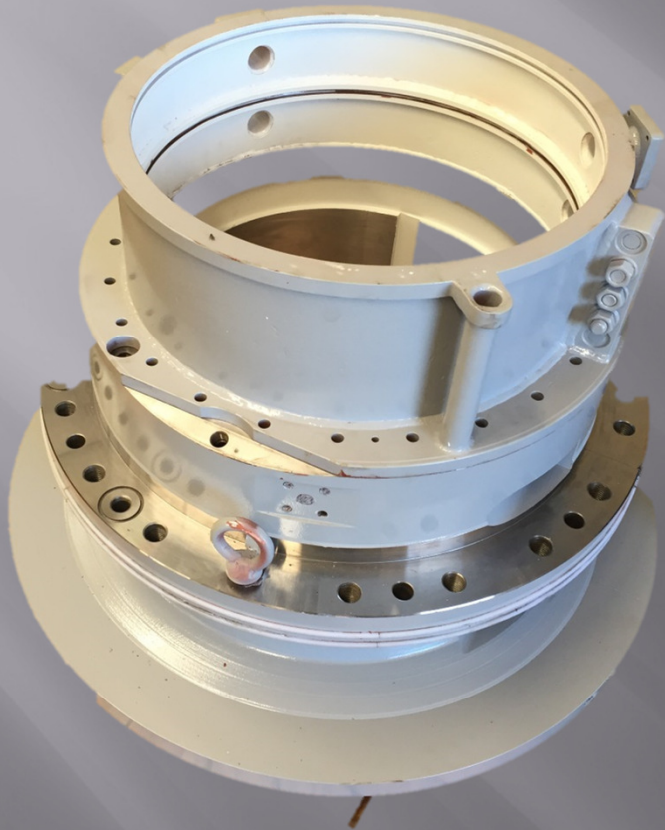


Hydro Bearings – Vertical Bearings UHE SENHORA DO PORTO



Hydro Bearings – Vertical Bearings

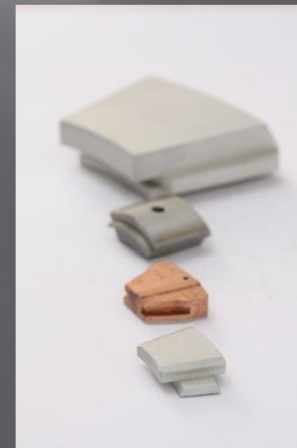
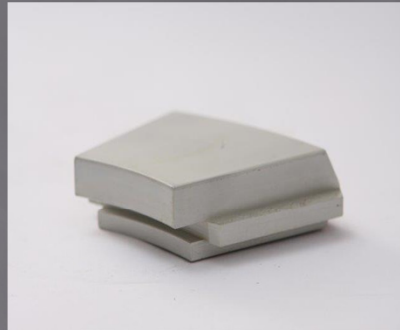
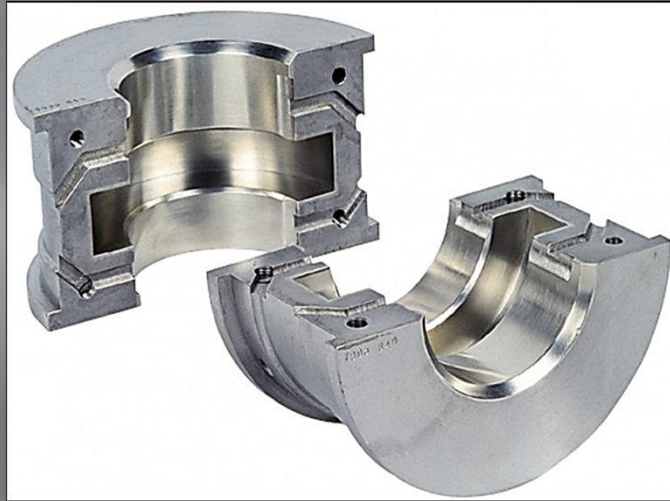
UHE SAO DOMINGOS



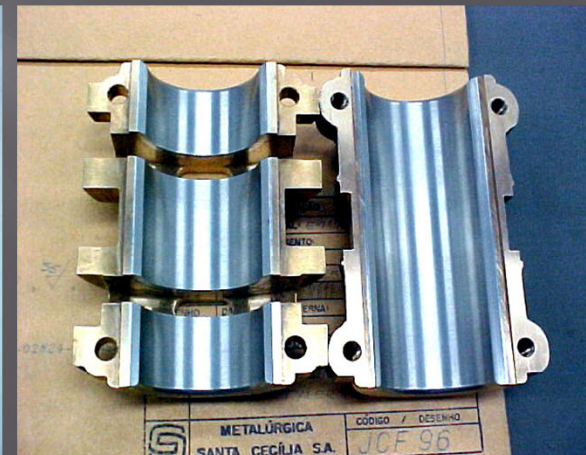
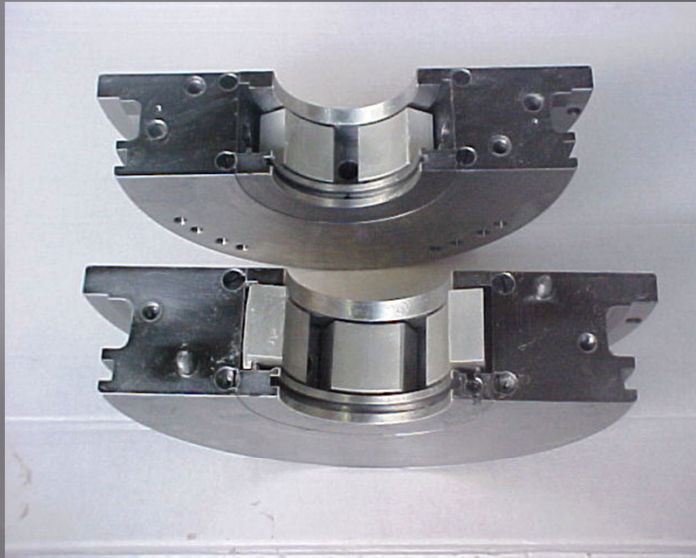
INDUSTRIAL FLUID FILM BEARINGS



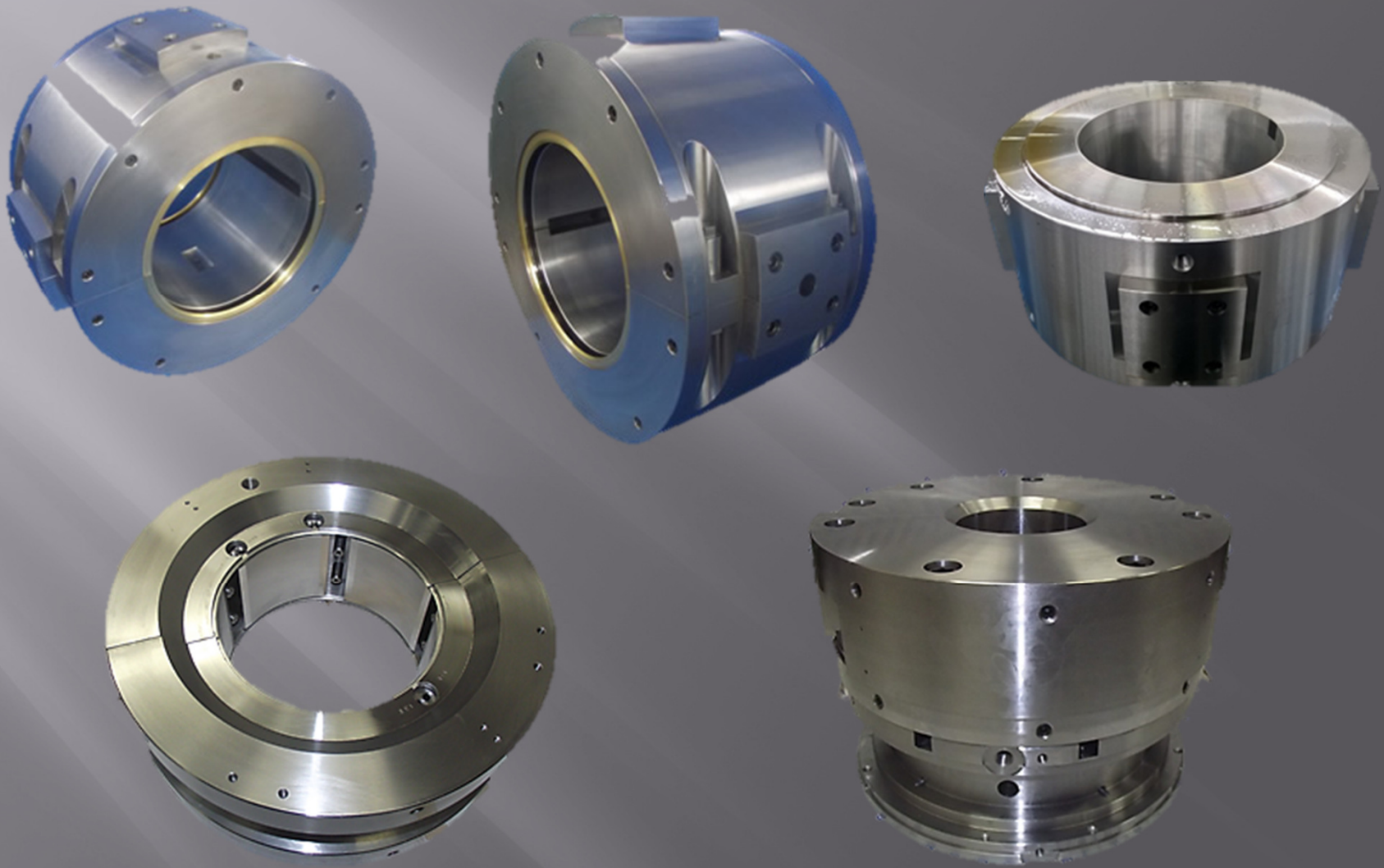
INDUSTRIAL FLUID FILM BEARINGS



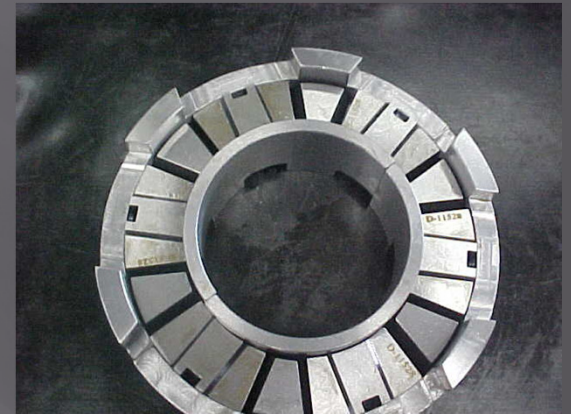
INDUSTRIAL FLUID FILM BEARINGS



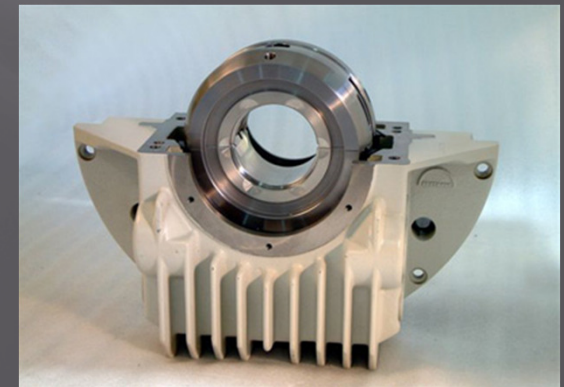
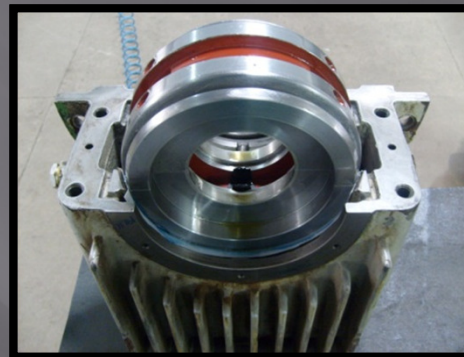
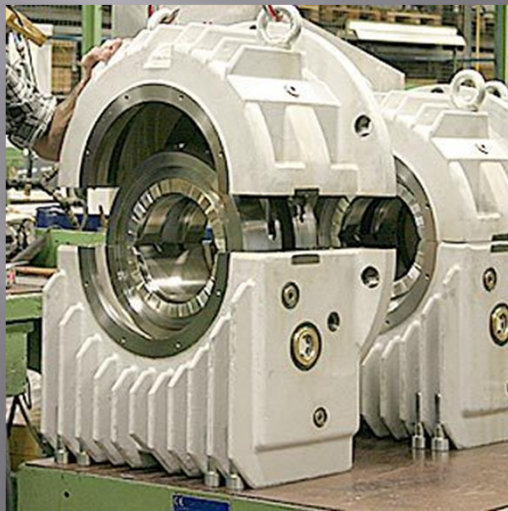
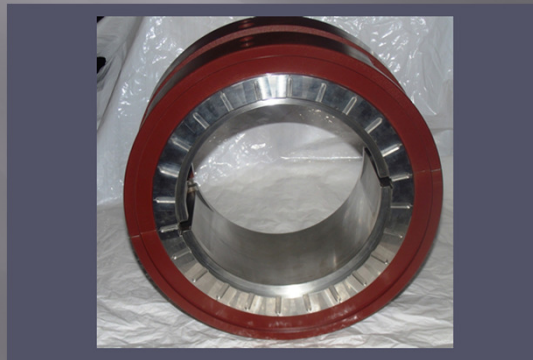
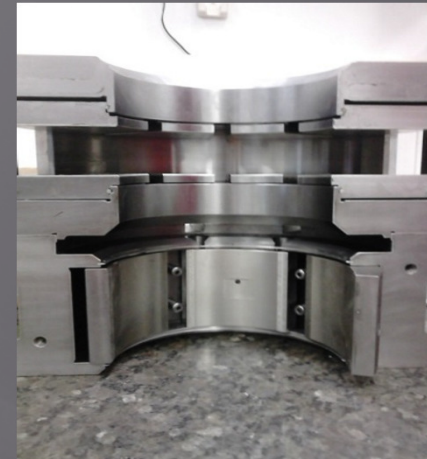
INDUSTRIAL FLUID FILM BEARINGS



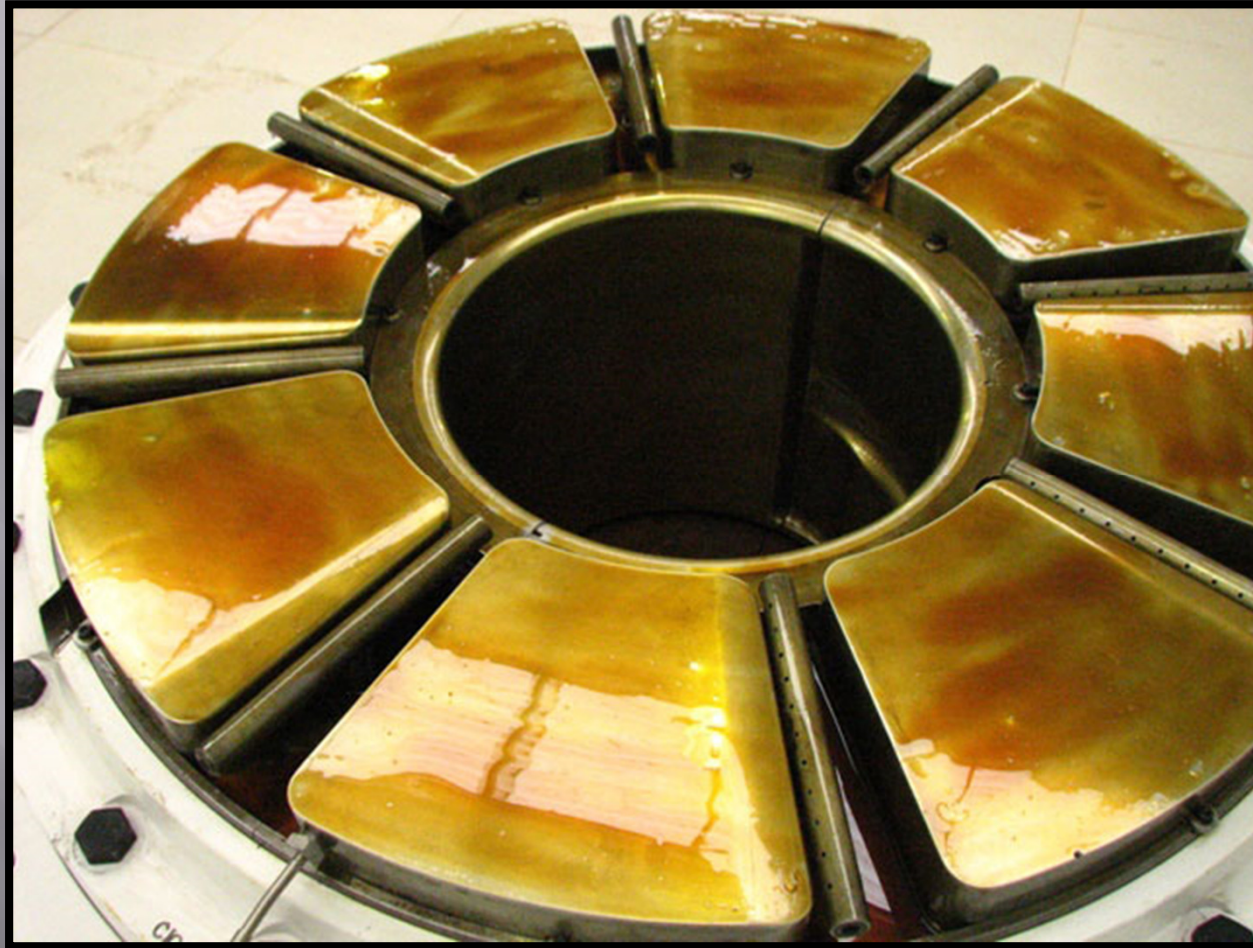
INDUSTRIAL FLUID FILM BEARINGS



DIN - BEARINGS SHELLS

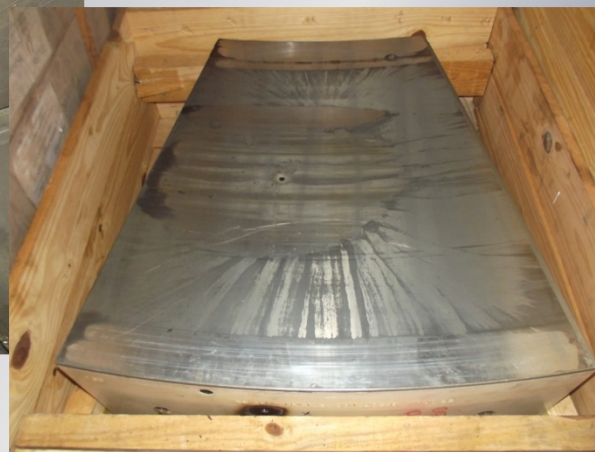


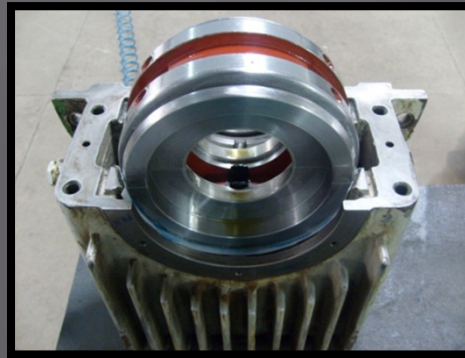
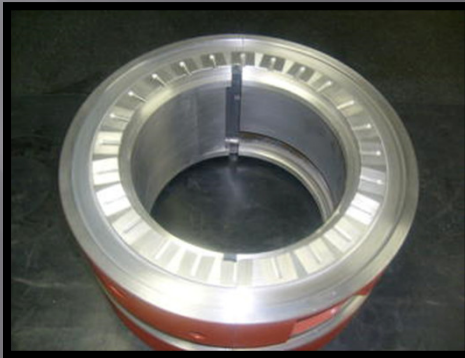
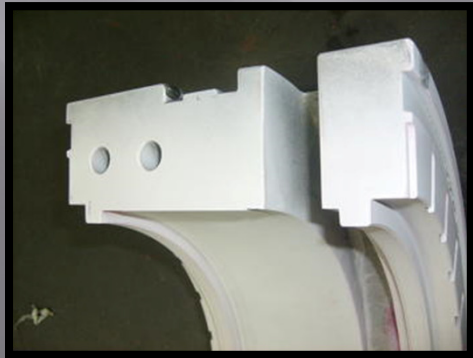
O funcionamento das máquinas modernas depende, principalmente, do funcionamento perfeito dos mancais nelas existentes.

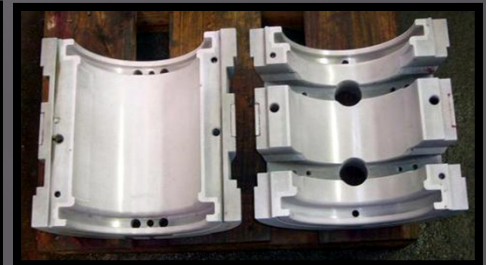
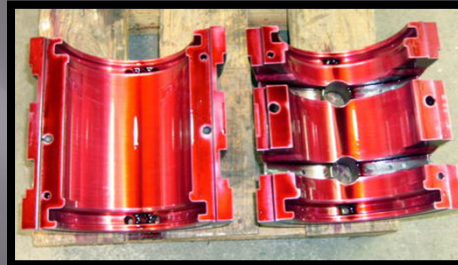
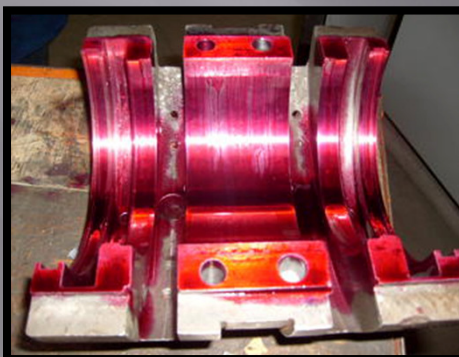
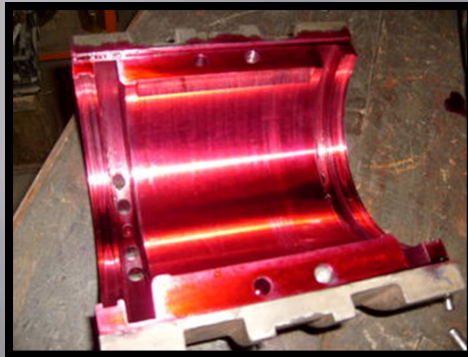


A falha dos mancais sejam eles de deslizamento ou de rolamento, é motivo suficiente para fazer as máquinas pararem de funcionar, causando prejuízos para a produção...

BEARINGS AND PADS REPAIR





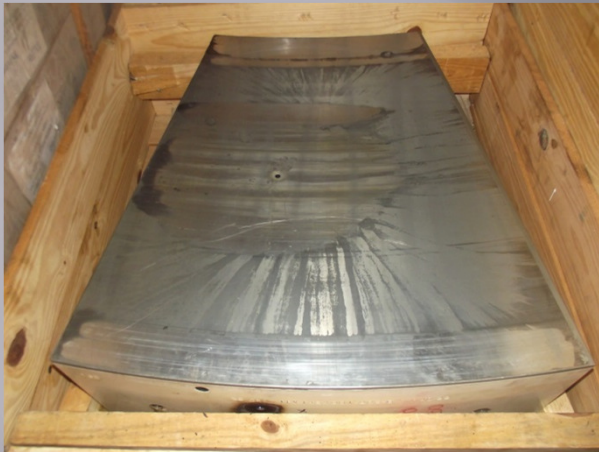


Our reverse engineering expertise contribute to increase the life of your equipment. With our extensive knowledge of materials and technological resources , we can recommend some improvements.



Our capability to provide high quality components offers more benefits for your budget, perhaps there is the need for replacement parts to restore the equipment and optimize performance

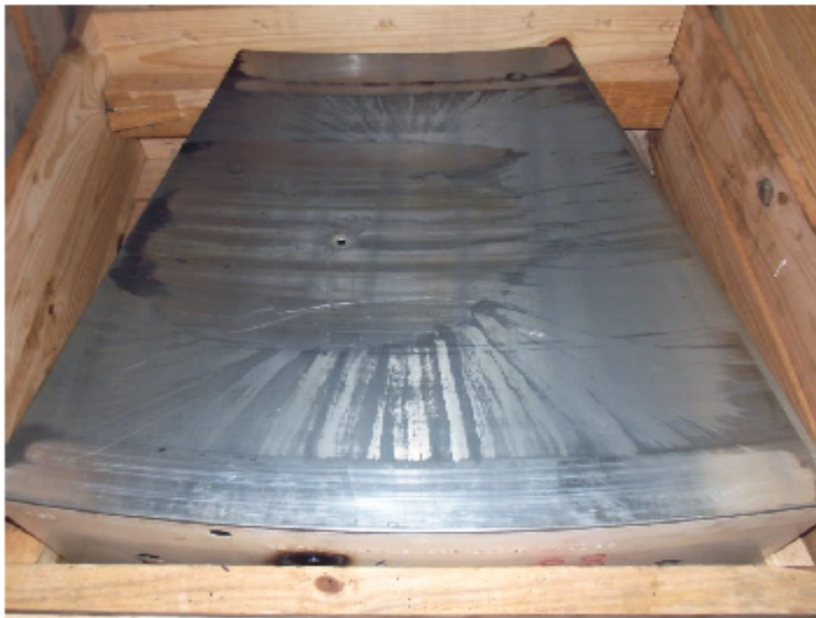
▣ PADS REPAIR - TUCURUI



▣ PADS REPAIR - TUCURUI

Turbina – FRANCIS

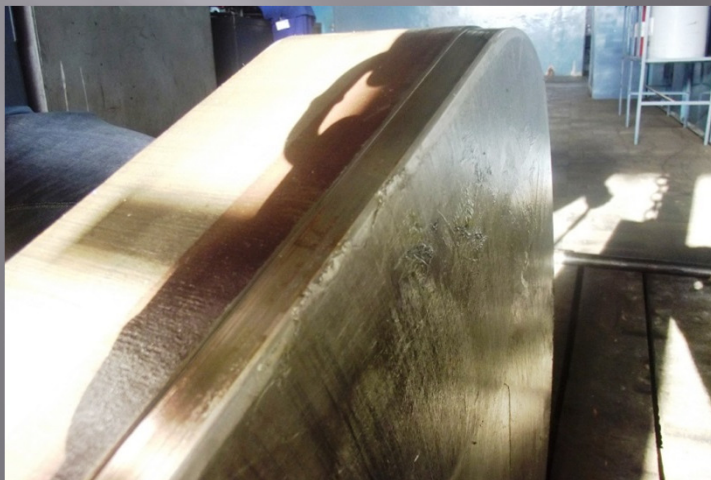
Antes

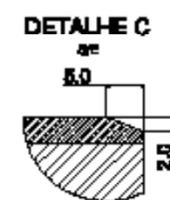
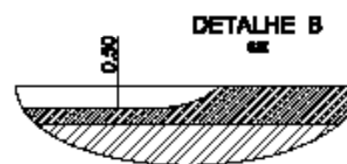
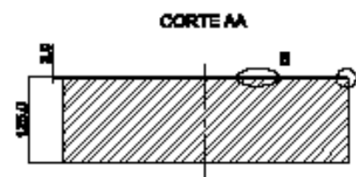


Depois





▣ PADS REPAIR



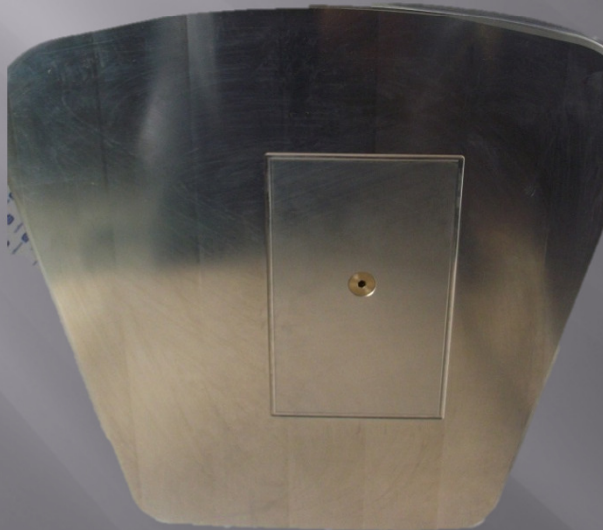


CDR:

- do se prezintă în unitate a douăzeci și doi ani de vârstă, cu aspect fizic normal.
- Judecând în urma examenului clinic, sunt suspectate: diabetul zahăr, hipertensiune arterială.
- Plagă la nivelul piciorului stâng, din cauza căruia este internat.

AREA	REQ.	ALPHANUMERIC	INT.	MODE	DATA
APPROPRIATE		LUNAR/LUNAR + AIR + SEA + SUB			
APPROPRIATE		TRANSMITTER:			
APPROPRIATE		RECEIVER:			
VIDEO		PHOTOGRAPH:			
THERM		TEMP:			
COMMISSION		SIGNAL/TEMPERATURE:			
		PRECEDENCE:			
		PRIORITY:			
SECTION	THREAT				
101	Signature Point (JULY 20, 2001)				
MUTUAL/PROSA			CIVILIAN / CIVILIAN		
BOMBS, CRIMINAL, SEA			ASAA 20		

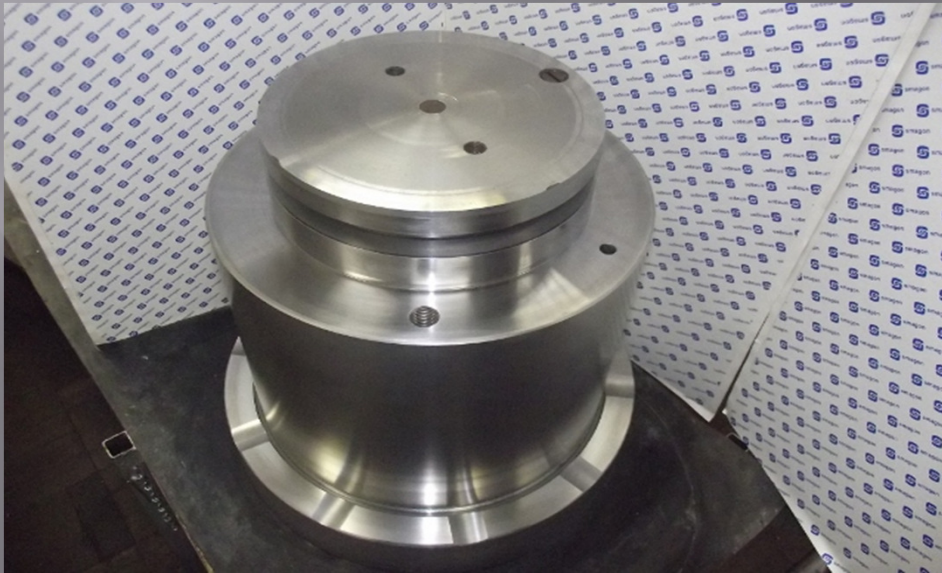
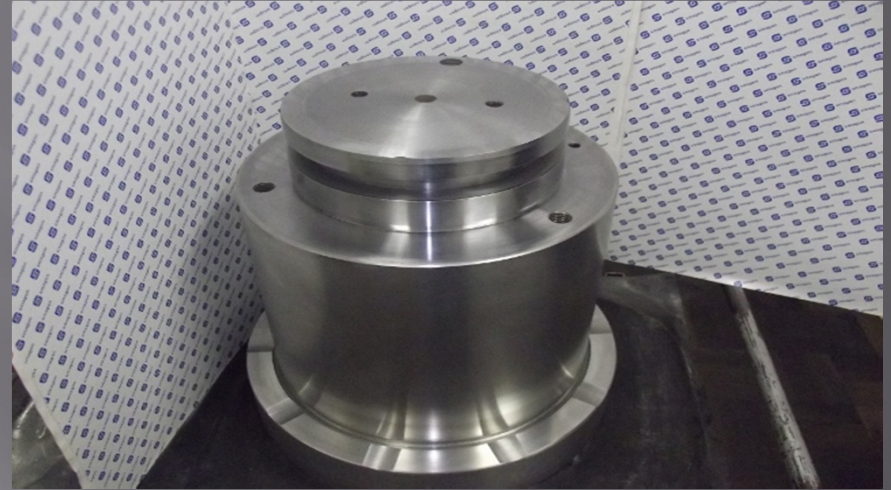
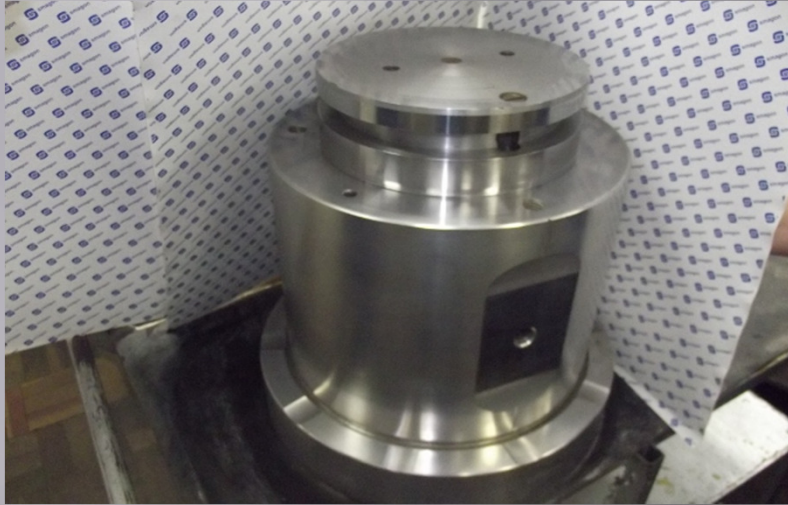
▣ PADS REPAIR



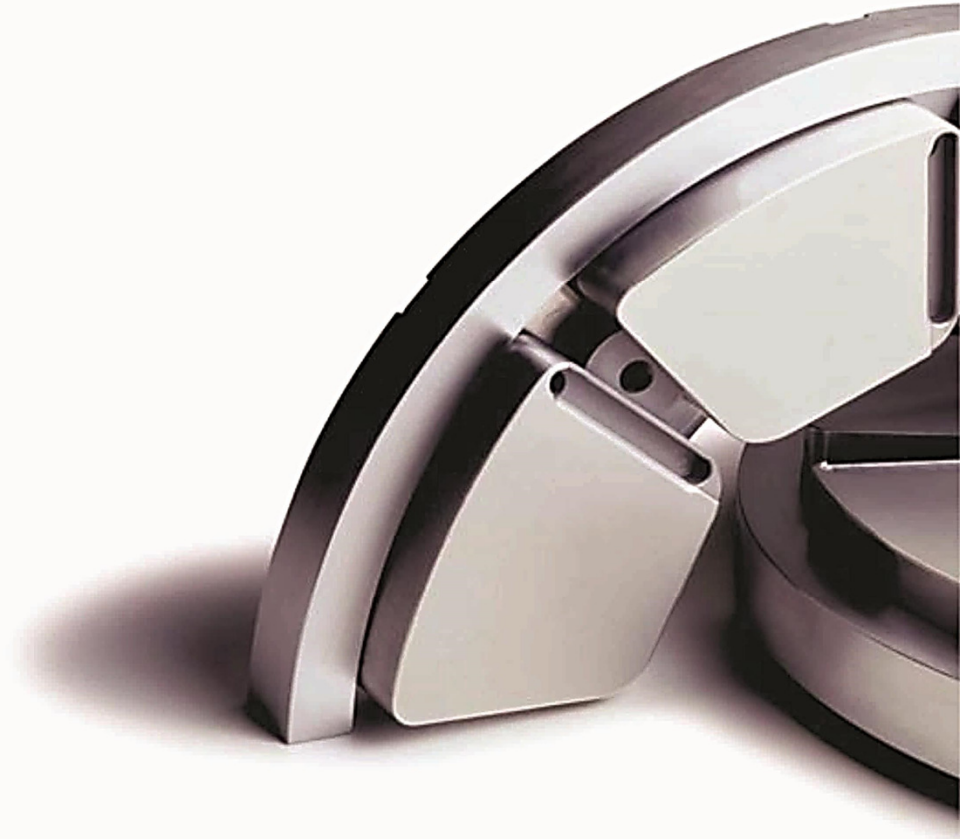
▣ AXLE REPAIR



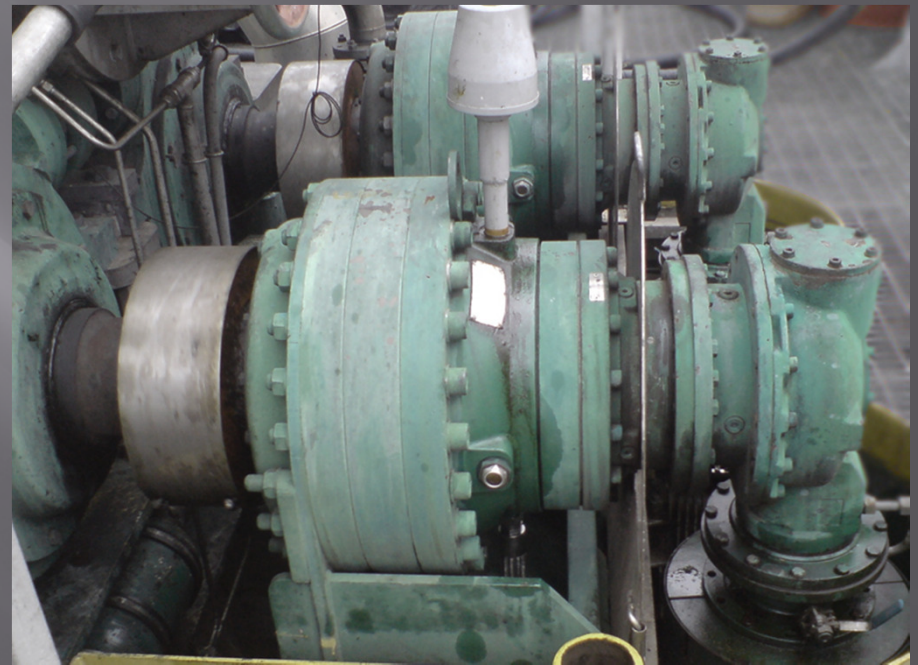
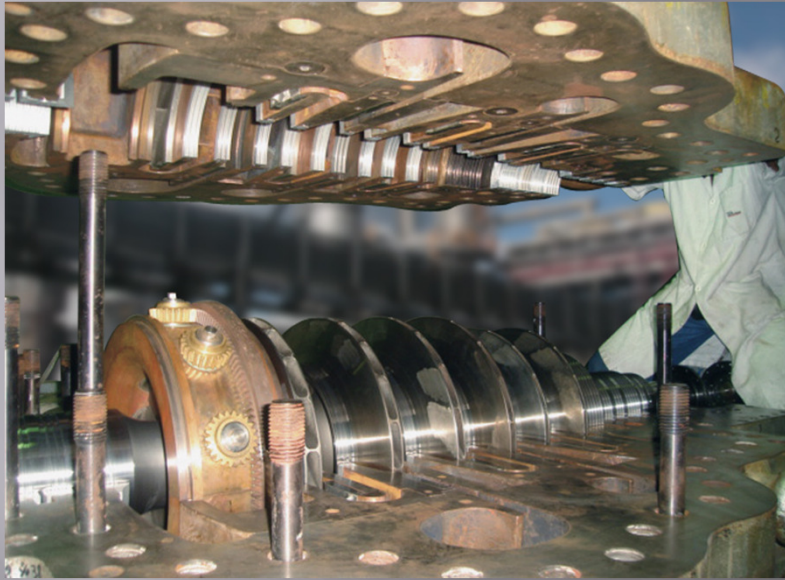
▣ AXLE REPAIR



The SMAGON , manufactures and supplies bearings for a wide variety of purposes and meets the demanding requirements of performance, quality , cost and delay



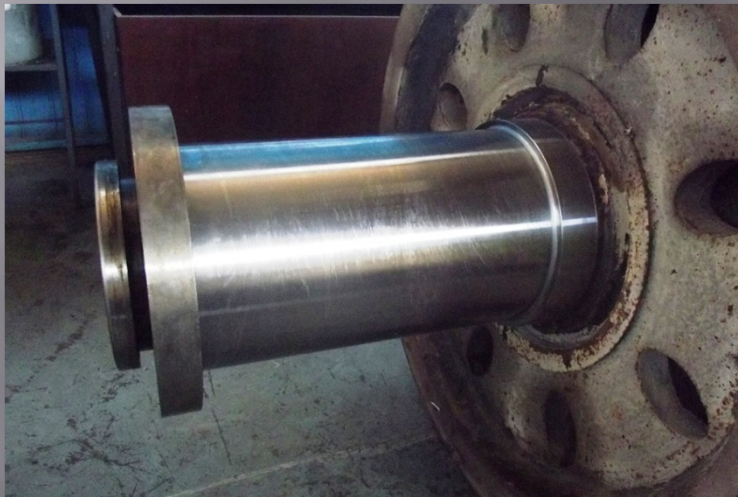
▣ MRO (Maintenance , Repair and Overhaul)



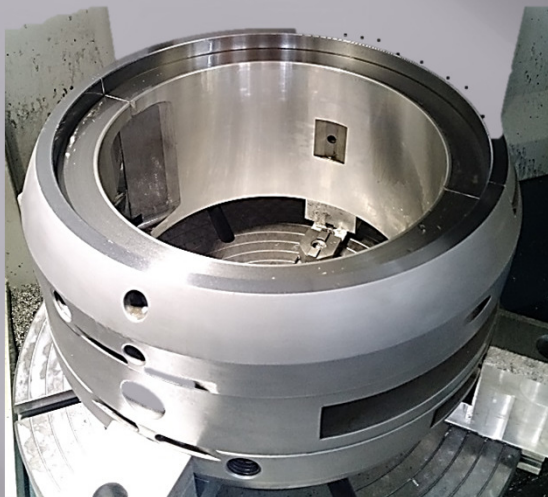
▣ AXLE REPAIR



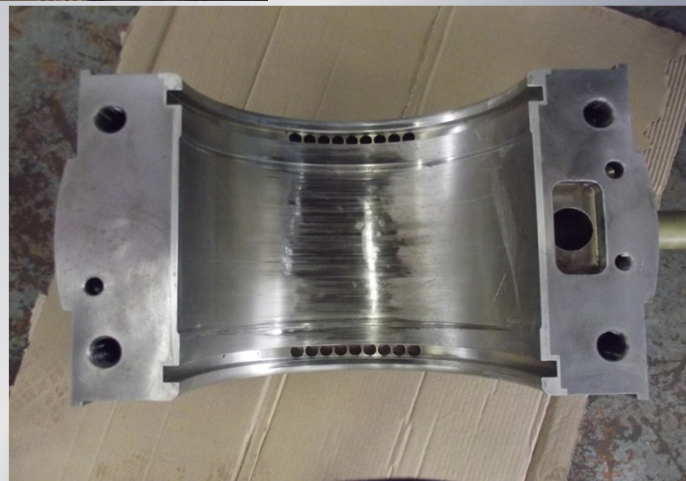
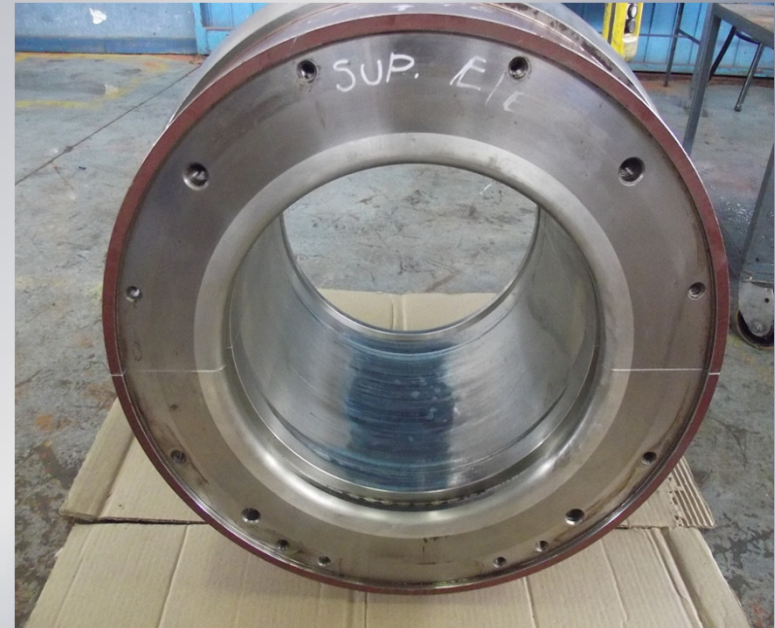
▣ AXLE REPAIR



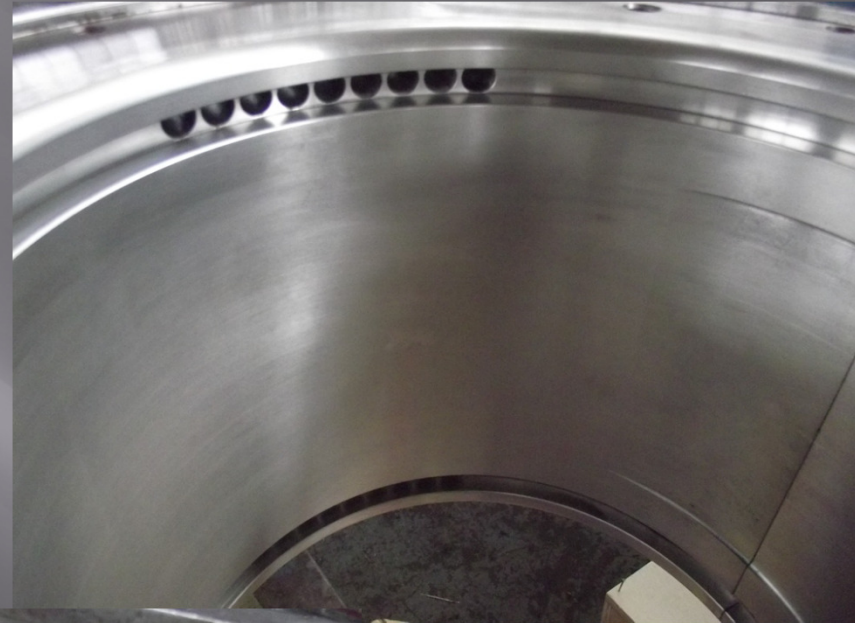
REPAIR DIN SIZE 28



Gaz Turbine – SIEMENS / WH



Gás Turbine – SIEMENS / WH



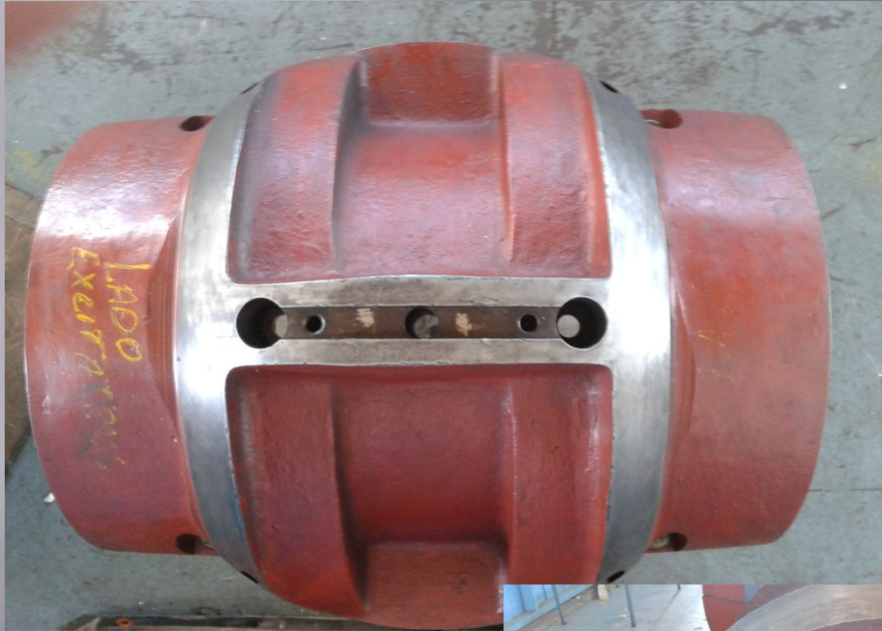
Cement Mills



Cement Mills



Gerador (Generator) - GE

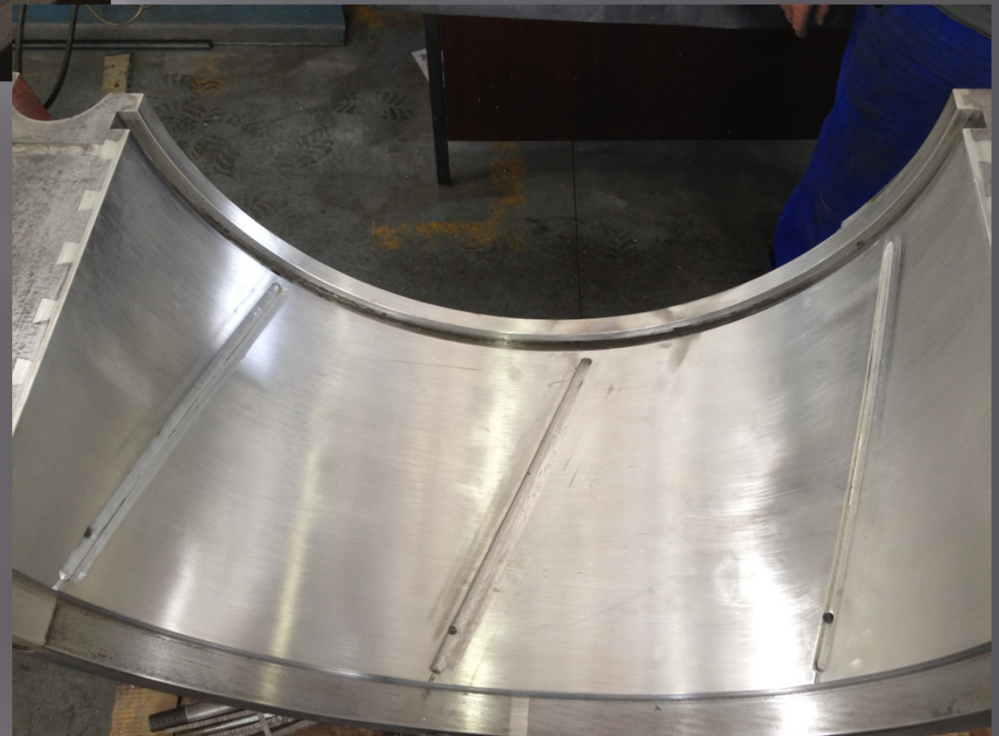
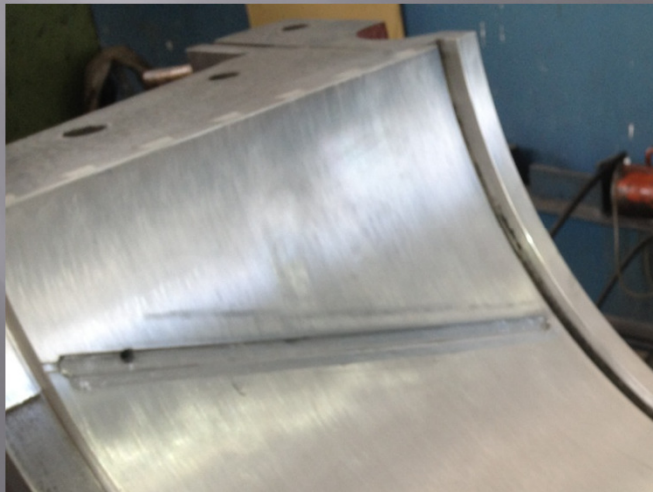
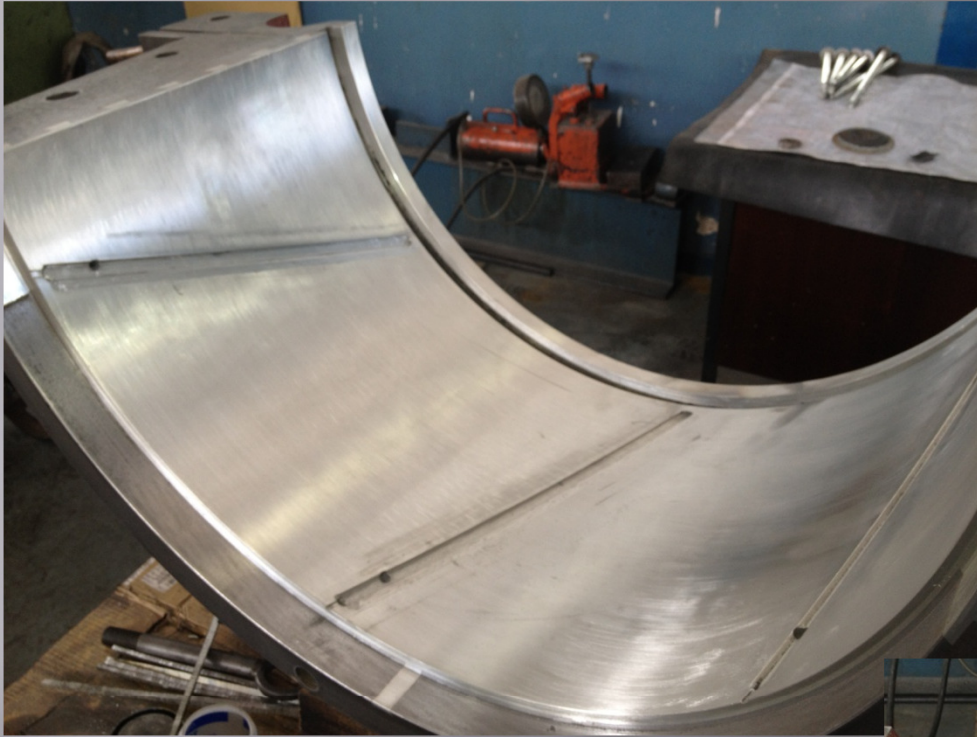




Turbina (Turbine) – CHARMILLES – EMAE – Henry Borden





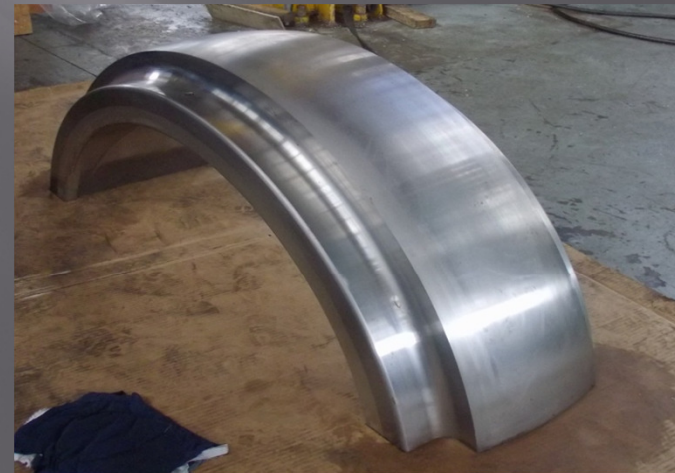




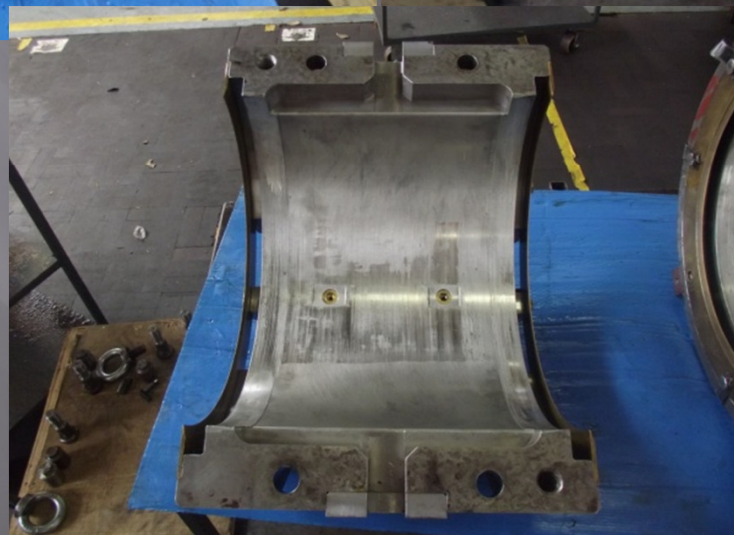
Moinho (Mill) - USIMINAS

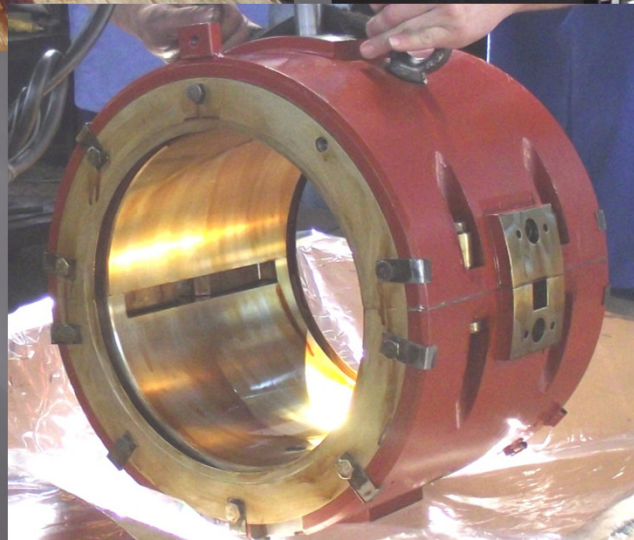


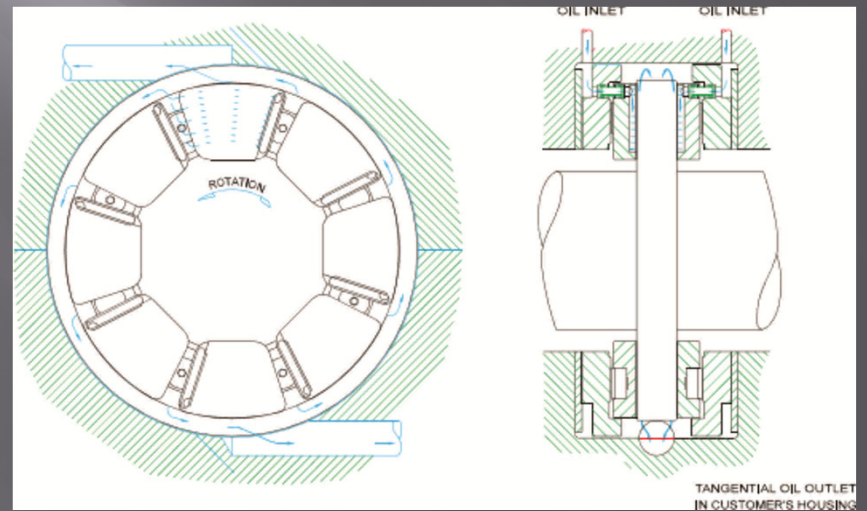
Moinho (Mill) - USIMINAS



Turbina (Turbine) – ABB







Machining Service

	DIAM	LENGHT	HEIGHT	WIDHT
	(millimeter dimensions)			
Turning + grinding	2000	1300	-	-
Automatic lathe	20	up to 400	-	-
Cylindric grinding	500	1000	-	-
Flat + prismatic grinding	-	1500	350	350
Large boring	1500	1000	-	-
Small boring	20	up to 400	-	-
Vertical machining center	-	600	400	500
Vertical machining center		700	600	700
Vertical machining center		1400	800	1400

- Main Customers



Brookfield



ArcelorMittal

ALSTOM



SULZER



SIEMENS



USIMINAS



Rolls-Royce



THANK YOU